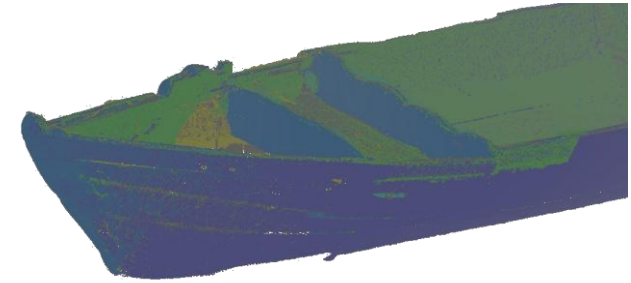


# 3D laser scanner for large dimensions

## Zoller+Fröhlich Imager 5010i

### Technical data

- Measuring range: 0.3 - 187.3 m
- Scanning range: 360° x 320°
- Scanning rate: up to 1,016,000 points/sec
- Angle resolution: 0.0016°
- Measuring precision: 0.3 mm rms (@10 m)  
0.8 mm rms (@50 m)
- Laser protection class: 1



Cloud diagram of an historic Rostock barge

### Fields of use / application

- Measuring of technical large structures with high precision, e.g.
  - Ship rumps and sections,
  - wind turbine vanes and forms.
- Documentation of historical buildings and facilities
- Surveying of factory equipment and workshops



Overhead scanning on a yacht