

Faro Focus X130 3D Scanner

Technical data

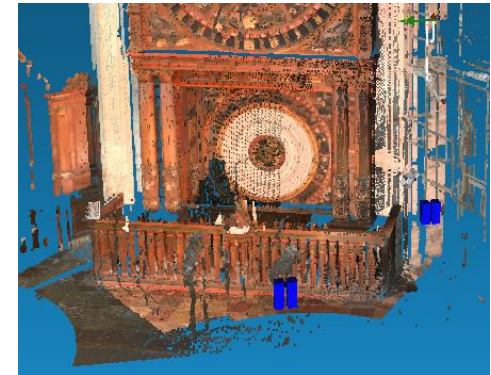
Measuring range	0.6 m to 130 m
Measuring rates	up to 976,000 points/second
Systematic distance error	± 2 mm
Built-in colour camera	Up to 70 megapixels
Laser protection class	1

Fields of use / applications

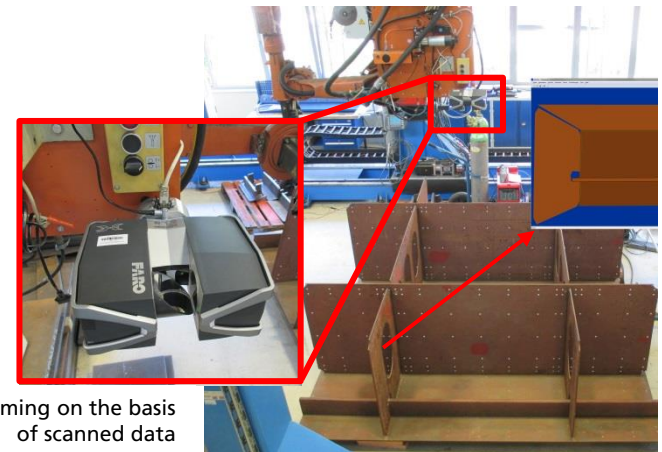
- Automation applications, e.g. online programming of robots
- Measuring of large technical structures with high precision, e.g.
 - Ship rumps and sections,
 - Wind turbine vanes and forms
- Documentation of historical buildings and facilities
- Surveying of factory equipment and workshops



Faro Focus X130 3D Scanner



3D point cloud of the astronomical clock in the Sankt-Marien-Kirche Rostock (Church of St. Mary)



Online programming on the basis of scanned data