

Laser tracker for the tactile measuring of large structures

Leica AT 960 LR

Technical data

Measurement volume	160 m 360° horizontal ± 145° vertical
Measuring speed	3000 pixel/s
Measuring precision	Distance precision (AIFM) ± 0.5 µm/m Angle measurement ± 15 µm + 6 µm/m Dynamic target detection ± 10 µm



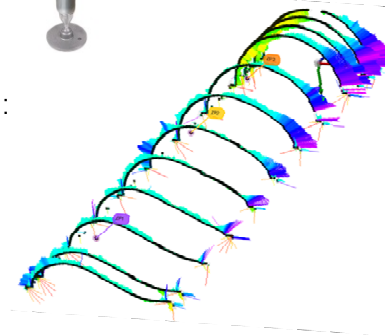
Leica AT 960 LR



Robot calibration and control

Areas of use / applications

- Tactile measurement of large structures with very high precision, e.g.:
 - Master prototype, rotor blade and form
 - Alignment and testing of machine engineering elements
 - Determination of variations in shape and location
- Robot control and calibration
- Dynamic measurements with high sampling rates



Testing of rotor blade model